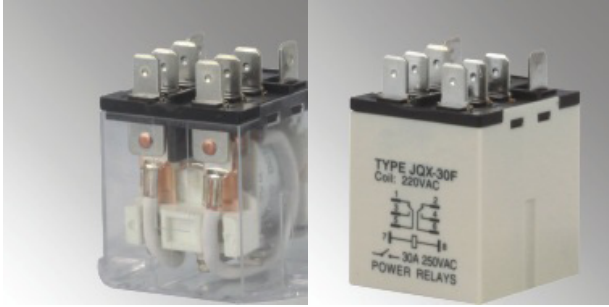


# POWER RELAY

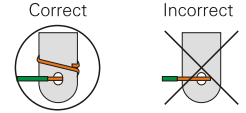


JQX-30F

JQX-30F



JQX-30F



## Contact specification

Contact form	2Z、2H、2D
Contact resistance	≤100mΩ ( 1A 6VDC )
Contact material	AgCdO AgSnO <sub>2</sub>
Contact capacity	30A 250VAC /30VDC

## Technical specification

Insulation resistance	≥1000MΩ ( 500VDC )
Dielectric strength	Between coil and contact ≥2500VAC 1min
	Between open contact ≥1200VAC 1min
Operate / Release time	≤20ms/15ms
Terminal type	Quick terminal mounting

## Coil specification

Rated coil power	DC1.5 W AC2.5VA
------------------	-----------------

## DC Coil data

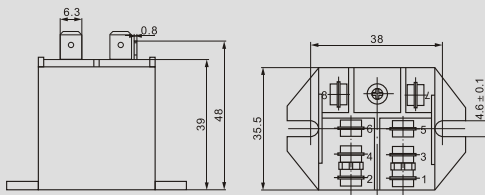
Nominal voltage	Operate voltage	Release voltage	Coil resistance
VDC	VDC	VDC	Ω ± 10%
6	4.8	0.6	24
12	9.6	1.2	96
24	19.2	2.4	384
48	38.4	4.8	1540
60	48.0	6.0	2400
110	88.0	11.0	8060

## AC Coil data

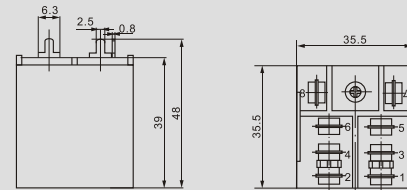
Nominal voltage	Operate voltage	Release voltage	Coil resistance
VAC	VAC	VAC	Ω ± 10%
12	9.6	3.6	20
24	19.2	7.2	80
48	38.4	14.4	320
110	88.0	36.0	1700
220	176.0	72.0	6770
240	176.0	72.0	8060

## Outline dimension、Mounting holes (Bottom view)、 Wiring diagram (Bottom view)

JQX-30F Outline dimension



JQX-30F (PCB) Outline dimension



JQX-30F Wiring diagram(Bottom view)

