

LANGIR

Ⓢ CE CB RoHS TÜV

PANEL SOCKET

The material of L series industrial plugs and sockets has the best impact resistance and toughness. When set them into the -25 ℃ environment after 16 hours. and then drop from 80cm high place, they are also still maintained perfectly. And the material can withstand about 850℃ glow-wire test and ROHS test.



LANGIR

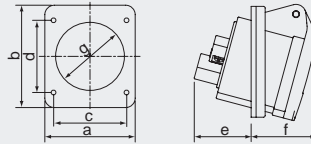
Sloping Panel Sockets

L313-4
L313



L313-4	16A 110-130V~ 2P+E	4h
L313	16A 220-250V~ 2P+E	6h

> IP44 splashproof



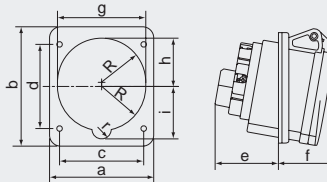
	pole	3
dimension(mm)	a	75.5
	b	86.5
	c	61
	d	61
	e	36
	f	37
	g	57.5
cable nominal cross-section area(mm ²)		1.5-4

L323-4
L323



L323-4	32A 110-130V~ 2P+E	4h
L323	32A 220-250V~ 2P+E	6h

> IP44 splashproof



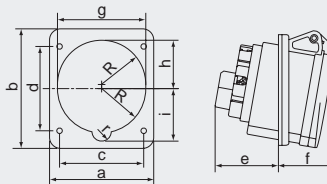
	pole	3
dimension(mm)	a	75.5
	b	86.5
	c	61
	d	61
	e	55
	f	42
	g	64
	h	35
	i	38
	R	32
	r	7
	cable nominal cross-section area(mm ²)	

L314
L324



L314	16A 380-415V~ 3P+E	6h
L324	32A 380-415V~ 3P+E	6h

> IP44 splashproof



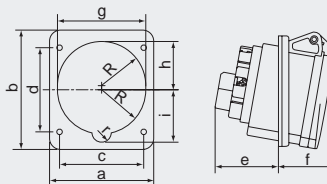
rated current(A)	16	32	
	pole	4	
dimension(mm)	a	75.5	75.5
	b	86.5	86.5
	c	61	61
	d	61	61
	e	40	55
	f	40	42
	g	64	64
	h	35	35
	i	38	38
	R	32	32
	r	7	7
	cable nominal cross-section area(mm ²)		1.5-4

L315
L325



L315	16A $\frac{220-380V\sim}{240-415V\sim}$ 3P+N+E	6h
L325	32A $\frac{220-380V\sim}{240-415V\sim}$ 3P+N+E	6h

> IP44 splashproof



rated current(A)	16	32	
	pole	5	
dimension(mm)	a	75.5	80
	b	86.5	90
	c	61	65
	d	61	70
	e	40	51
	f	41	45
	g	64	70
	h	35	37.5
	i	38	40.5
	R	32	35
	r	7	7
	cable nominal cross-section area(mm ²)		1.5-4

LANGIR

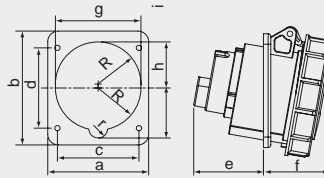
Sloping Panel Sockets

L3131
L3231



L3131	16A 220-250V~ 2P+E	6h
L3231	32A 220-250V~ 2P+E	6h

> IP67 watertight



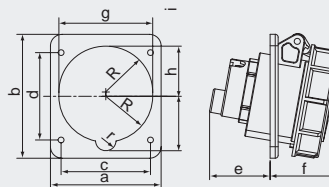
rated current(A)	16	32	
	pole		
	3		
dimension(mm)	a	75.5	75.5
	b	86.5	86.5
	c	61	61
	d	61	61
	e	41	52.5
	f	45	49.5
	g	64	64
	h	35	35
	i	38	38
	R	32	32
	r	7	7
cable nominal cross-section area(mm ²)	1.5-4	2.5-10	

L3141
L3241



L3141	16A 380-415V~ 3P+E	6h
L3241	32A 380-415V~ 3P+E	6h

> IP67 watertight



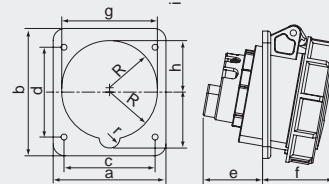
rated current(A)	16	32	
	pole		
	4		
dimension(mm)	a	75.5	75.5
	b	86.5	86.5
	c	61	61
	d	61	61
	e	41.5	52.5
	f	46	49.5
	g	64	64
	h	35	35
	i	38	38
	R	32	32
	r	7	7
cable nominal cross-section area(mm ²)	1.5-4	2.5-10	

L3151
L3251



L3151	16A $\frac{220-380V\sim}{240-415V\sim}$ 3P+N+E	6h
L3251	32A $\frac{220-380V\sim}{240-415V\sim}$ 3P+N+E	6h

> IP67 watertight



rated current(A)	16	32	
	pole		
	5		
dimension(mm)	a	75.5	80
	b	86.5	90
	c	61	65
	d	61	70
	e	40	51.5
	f	48	52.5
	g	64	70
	h	35	37.5
	i	38	40.5
	R	32	35
	r	7	7
cable nominal cross-section area(mm ²)	1.5-4	2.5-10	

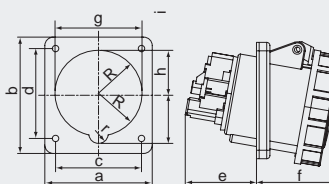
L3331
L3341
L3351



> current:63A

L3331	L3341	L3351
220-250V~	380-415V~	$\frac{220-380V\sim}{240-415V\sim}$
2P+E	3P+E	3P+N+E

> IP67 watertight



earth contact position	6h	
	pole	
	3/4/5	
dimension(mm)	a	100
	b	110
	c	80
	d	85
	e	66.5
	f	77.5
	g	81
	h	42.5
	i	45.5
	R	40.5
	r	9
cable nominal cross-section area(mm ²)	6-25	

LANGIR

Sloping Panel Sockets

L3431

L3441

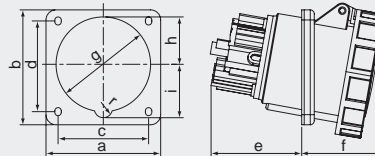
L3451



> current:125A

L3431	L3441	L3451
220-250V~	380-415V~	220-380V~ 240-415V~
2P+E	3P+E	3P+N+E

> IP67 watertight



earth contact position	6h	
	pole	3/4/5
dimension(mm)	a	114
	b	114
	c	90
	d	90
	e	90.5
	f	80.5
	g	94
	h	47
	i	53
	r	9
	cable nominal cross-section area(mm ²)	6-25

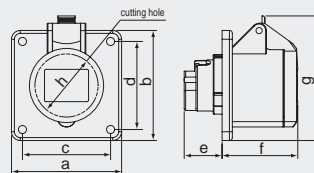
L413-4

L423-4



L413-4	16A 110-130V~ 2P+E	4h
L423-4	32A 110-130V~ 2P+E	4h

> IP44 splashproof



rated current(A)	16	32
	pole	3
dimension(mm)	a	75
	b	75
	c	60
	d	60
	e	25.8
	f	52
	g	85
	h	43
cable nominal cross-section area(mm ²)	1.5-4	2.5-10

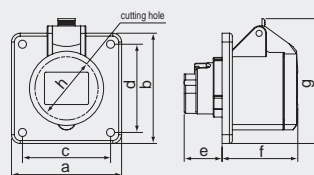
L413

L423



L413	16A 220-250V~ 2P+E	6h
L423	32A 220-250V~ 2P+E	6h

> IP44 splashproof



rated current(A)	16	32
	pole	3
dimension(mm)	a	75
	b	75
	c	60
	d	60
	e	25.8
	f	52
	g	85
	h	43
cable nominal cross-section area(mm ²)	1.5-4	2.5-10

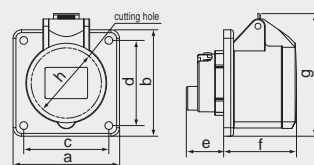
L414

L424



L414	16A 380-415V~ 3P+E	6h
L424	32A 380-415V~ 3P+E	6h

> IP44 splashproof



rated current(A)	16	32
	pole	4
dimension(mm)	a	75
	b	75
	c	60
	d	60
	e	26.3
	f	51.5
	g	86.5
	h	49.5
cable nominal cross-section area(mm ²)	1.5-4	2.5-10

LANGIR

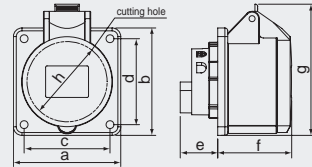
Sloping Panel Sockets

L415
L425



L415	16A 220-380V~ 240-415V~ 3P+N+E	6h
L425	32A 220-380V~ 240-415V~ 3P+N+E	6h

> IP44 splashproof



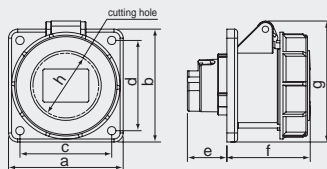
rated current(A)	16	32
	pole	
	5	
dimension(mm)	a	75
	b	75
	c	60
	d	60
	e	26.2
	f	52
	g	91.6
	h	56
cable nominal cross-section area(mm ²)	1.5-4	2.5-10

L4131-4
L4231-4



L4131-4	16A 110-130V~ 2P+E	4h
L4231-4	32A 110-130V~ 2P+E	4h

> IP67 watertight



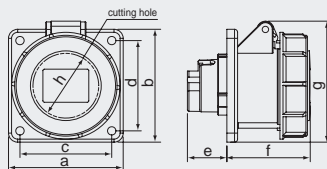
rated current(A)	16	32
	pole	
	3	
dimension(mm)	a	75
	b	75
	c	60
	d	60
	e	25.8
	f	54.5
	g	80.5
	h	43
cable nominal cross-section area(mm ²)	1.5-4	2.5-10

L4131
L4231



L4131	16A 220-250V~ 2P+E	6h
L4231	32A 220-250V~ 2P+E	6h

> IP67 watertight



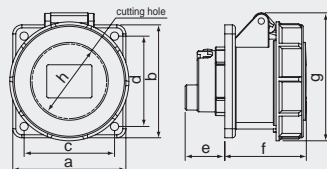
rated current(A)	16	32
	pole	
	3	
dimension(mm)	a	75
	b	75
	c	60
	d	60
	e	25.8
	f	54.5
	g	80.5
	h	43
cable nominal cross-section area(mm ²)	1.5-4	2.5-10

L4141
L4241



L4141	16A 380-415V~ 3P+E	6h
L4241	32A 380-415V~ 3P+E	6h

> IP67 watertight



rated current(A)	16	32
	pole	
	4	
dimension(mm)	a	75
	b	75
	c	60
	d	60
	e	26.3
	f	54.5
	g	85
	h	49.5
cable nominal cross-section area(mm ²)	1.5-4	2.5-10

LANGIR

Sloping Panel Sockets

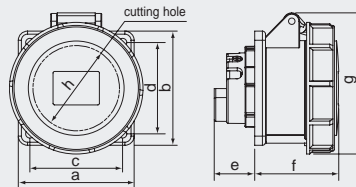
L4151

L4251



L4151	16A $\frac{220-380V\sim}{240-415V\sim}$ 3P+N+E	6h
L4251	32A $\frac{220-380V\sim}{240-415V\sim}$ 3P+N+E	6h

> IP67 watertight



rated current(A)		16	32
	pole	5	
dimension(mm)	a	75	75
	b	75	75
	c	60	60
	d	60	60
	e	26.2	29.8
	f	54.5	65.5
	g	93	103.5
	h	56	64
cable nominal cross-section area(mm ²)		1.5-4	2.5-10

L4331

L4341

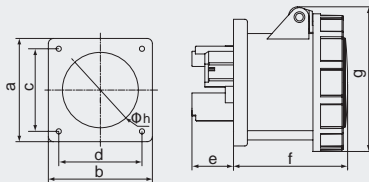
L4351



> current:63A

L4331	L4341	L4351
$\frac{220-250V\sim}{2P+E}$	$\frac{380-415V\sim}{3P+E}$	$\frac{220-380V\sim}{240-415V\sim}$ $\frac{220-380V\sim}{240-415V\sim}$ $\frac{220-380V\sim}{240-415V\sim}$ 3P+N+E

> IP67 watertight



earth contact position		6h
	pole	3/4/5
dimension(mm)	a	100
	b	100
	c	80
	d	80
	e	39
	f	94.5
	g	114.5
	h	73
cable nominal cross-section area(mm ²)		6-25

L4431

L4441

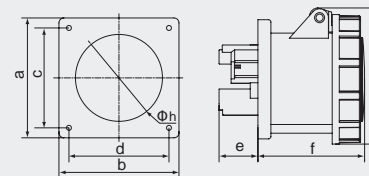
L4451



> current:125A

L4431	L4441	L4451
$\frac{220-250V\sim}{2P+E}$	$\frac{380-415V\sim}{3P+E}$	$\frac{220-380V\sim}{240-415V\sim}$ $\frac{220-380V\sim}{240-415V\sim}$ 3P+N+E

> IP67 watertight



earth contact position		6h
	pole	3/4/5
dimension(mm)	a	120
	b	120
	c	100
	d	100
	e	58
	f	105.5
	g	129
	h	87
cable nominal cross-section area(mm ²)		25-70