

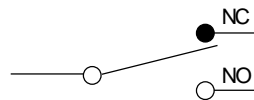


CZ Micro Switch

Features

- Various of actuators, the operation position is adjustable. (such as CZ-7121).
- Outer shell covered with intensive plastic, water-proof and oil-proof. The mechanical strength is better than CM type of micro switch, bear hitting.

Contact Form



Ratings

Rated voltage	Noninductive Load (A)				Inductive Load (A)			
	Resistance Load		Lamp Load		Inductive Load		Motor Load	
	NC	NO	NC	NO	NC	NO	NC	NO
125VAC	10		3	1.5	10		5	2.5
250VAC	10		2.5	1.25	10		3	1.5
480VAC	3		1.5	0.75	2.5		1.5	0.75
8VDC	10		3	1.5	6		6	5
14VDC	10		3	1.5	6		6	5
30VDC	8		3	1.5	6		5	2.5
125VDC	0.5		0.4	0.4	0.05		0.05	0.05
250VDC	0.25		0.2	0.2	0.03		0.03	0.03

NOTES:

1. Inductive load has a power factor of 0.4 min. (AC) and a time constant of 7 msec. max. (DC).
2. Lamp load has an inrush current of 10 times the steady-state current, while motor load has an inrush current of 6 times the steady-state current.

Characteristics

Operation speed	0.5mm-50cm/sec
Operating frequency	Mechanical: 120 operations/minute Electrical: 30 operations/minute
Contact resistance	15m Ω max. (initial value)
Insulation resistance	100m Ω above (at 500VDC)
Dielectric strength	1000VAC, 50/60 HZ for 1 minute between terminals of the same polarity
	1500VAC, 50/60 HZ for 1 minute between current-carrying and non-current-carrying metal parts
	1500VAC, 50/60 HZ for 1 minute between each terminal and ground
Vibration	10-55HZ, 1.5mm double amplitude
Shock	Mechanical durable: 1,000m/Sec ² (about 100G'S) Malfunction: 300m/Sec ² (about 30G'S)
Ambient temperature	-5°C to +65°C
Humidity	<95% RH
Life	Mechanical: 10,000,000 operations above (under rated OT) Electrical: 500,000 operations above
Weight	About 60g
Degree of protection	IP65

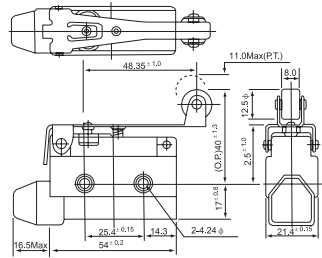
Operating characteristics

Models	CZ-7100	CZ-7110	CZ-7310	CZ-7311	CZ-7312	CZ-7120	CZ-7140	CZ-7121	CZ-7141	CZ-7124	CZ-7144	CZ-7166
OF Max.	600g	600g	600g	600g	600g	150g	220g	180g	240g	200g	280g	120g
RF Min.	100g	100g	100g	100g	100g	40g	60g	50g	80g	60g	100g	
PT Max.	2.0mm	2.0mm	2.0mm	2.0mm	2.0mm	13.5mm	8.5mm	11.0mm	6.5mm	11mm	6.5mm	250mm
OT Min.	0.8mm	5.0mm	6.0mm	6.0mm	6.0mm	4.0mm	2.5mm	3.0mm	2.0mm	3.0mm	2.0mm	11mm
MD Max.	0.8mm	0.8mm	0.8mm	0.8mm	0.8mm	3.2mm	2.0mm	2.4mm	1.5mm	2.4mm	1.5mm	
OP	30.5 ± 0.8mm	44 ± 1.2mm	21.8 ± 1.2mm	33.3 ± 1.2mm	33.3 ± 1.2mm	25 ± 1mm	25 ± 1mm	40 ± 1mm	40 ± 1mm	50 ± 1.2mm	50 ± 1.2mm	
FP						35mm	32mm		46mm		56mm	

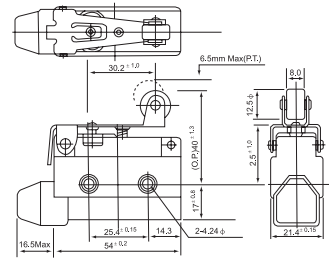
CZ Micro Switch

Appearance and dimension

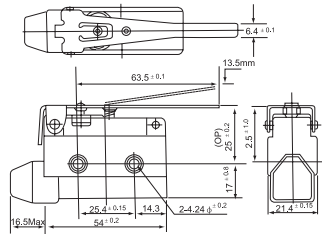
CZ-7121



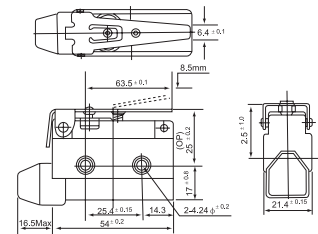
CZ-7141



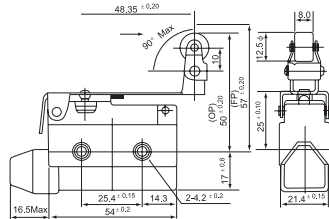
CZ-7120



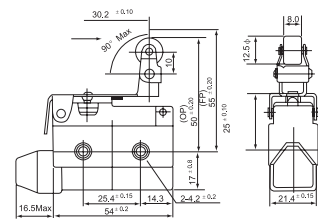
CZ-7140



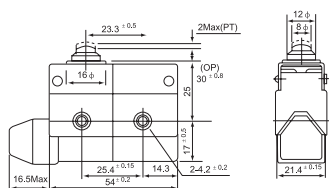
CZ-7124



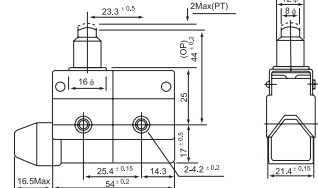
CZ-7144



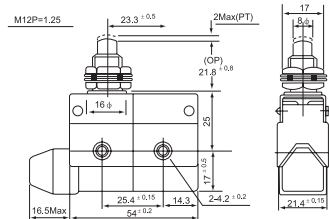
CZ-7100



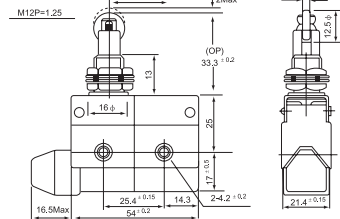
CZ-7110



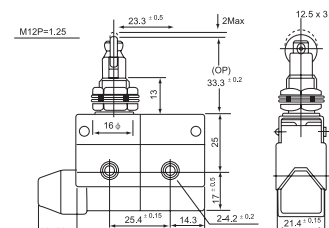
CZ-7310



CZ-7311



CZ-7312



CZ-7166

